



CLOCK TOWER SUITE

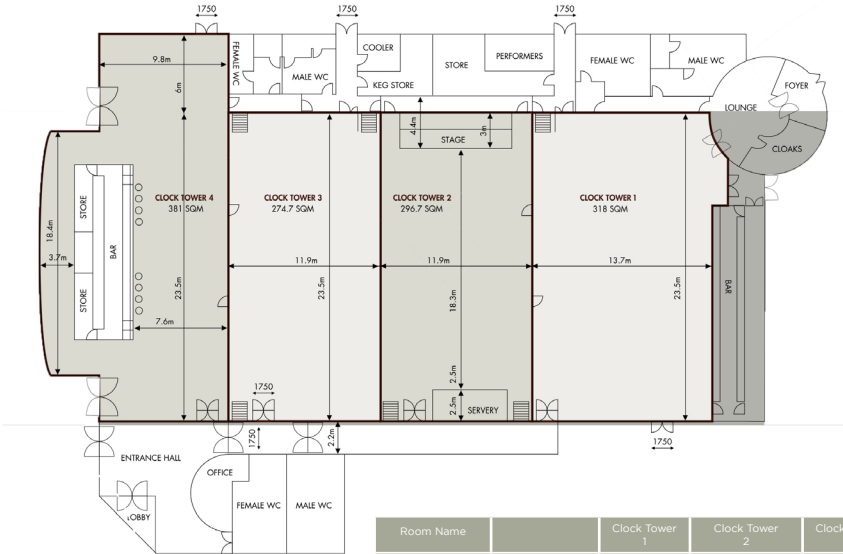
— TULLYGLASS HOTEL —

ROOM FEATURES

Our largest conference room, the Clock Tower Suite can accommodate up to 850 seated at round tables or 1280 when used 'theatre style'.

The Suite is fully flexible through carefully designed acoustic partitioning which can separate the room into four flexible areas if required.

- Adaptable conference / event / meeting spaces
- Air Conditioning
- Fully Wheelchair Accessible
- Built-in / portable Staging
- Free super-fast WI-FI, offering up to 100mbps
- Built-in overhead data projector and screen (HDMI and VGA compatible)
- Integrated 'Martin audio PA System'
- Hearing Loop System
- Bespoke Equipment & Stationery Packs are available on request

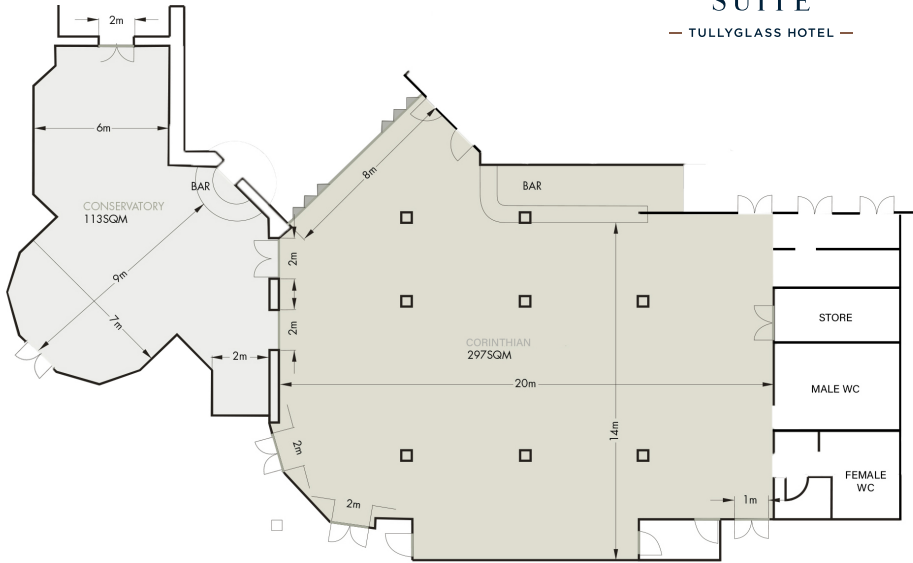


Room Name		Clock Tower 1	Clock Tower 2	Clock Tower 3	Clock Tower 4	Clock Tower 1 + 2	Clock Tower 3+4	Clock Tower 2+3+4	Clock Tower 1+2+3+4
Dimensions	Total Area	318m ²	296.7m ²	274.7m ²	381m ²	614.7m ²	655.7m ²	952.4m ²	1270.4m ²
	Room Size	23.5 x 13.7m	18.3 x 11.9m	23.5 x 11.9m	29.5 x 9.5m	23.5 x 25.6m	29.5 - 23.5 x 29.5m	29.5 x 31.4m	29.5 x 45.1m
	Room Height	6.1m	6.1m	6.1m	6.1m	6.1m	6.1m	6.1m	6.1m
	Entrance Width	1.75m	1.75m	1.75m	1.75m	1.75m	1.75m	1.75m	1.75m
Capacities for...									
Room Setup Styles	Theatre	380	350	350	200	175m	550	900	1280
	Round Tables	240	180	180	120	420	300	480	850
	Cabaret	192	144	144	96	336	240	384	680
	Boardroom	50	50	50	30	-	-	-	-
	U/Shape	50	50	50	30	-	-	-	-
	Classroom	50	50	50	30	-	-	-	-



CORINTHIAN SUITE

— TULLYGLASS HOTEL —



ROOM FEATURES

Our Corinthian Suite has just been restyled drawing its references from the Corinthian columns that featured in the original building. The Suite can cater for up to 200 guests or delegates 'theatre style' or round tables, 160 in 'cabaret style', or 50 'boardroom style'.

It also has the advantage of its location beside our Conservatory Suite which can for example, be used as breakout room, a pre-meeting space for coffee and canapes or other refreshments as delegates gather, or simply a registration space prior to an event.

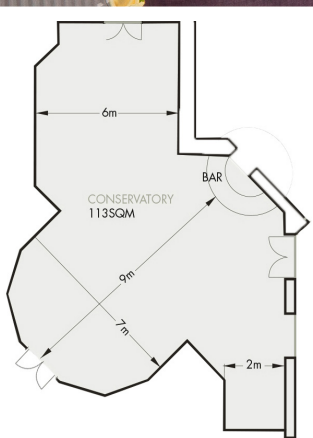
- Adaptable space dependent upon your event
- Air Conditioning
- Fully Wheelchair Accessible
- Built-in / portable Staging
- Free super-fast W-IFI, offering up to 100mbps
- Built-in overhead data projector and screen (HDMI and VGA compatible)
- Integrated 'Martin audio PA System'
- Hearing Loop System
- Bespoke Equipment & Stationery Packs are available on request

Room Name	Corinthian Suite	
Dimensions	Total Area	297m ²
	Room Size	20m x 14m
	Room Height	3m
	Entrance Width	1.75m
Capacities for...		
Room Setup Styles	Theatre	200
	Round Tables	200
	Cabaret	160
	Boardroom	50
	U/Shape	50
	Classroom	30



CONSERVATORY SUITE

TULLYGLASS HOTEL



ROOM FEATURES

Our Conservatory Suite offers the ideal setting for a smaller informal event, or as noted, can be used as a space to service larger events, for example as a reception area, or somewhere to serve refreshments as the delegates gather. When used as a stand-alone venue, we suggest a comfortable number of delegates is around 20 in 'boardroom style' or up to 60 if the event is less formal. This Suite is renowned for its natural light and comfort when used informally.

- Adaptable space dependent upon your event
- Air Conditioning
- Fully Wheelchair Accessible
- Free super-fast WI-FI, offering up to 100mbps
- Portable data projector and screen (HDMI and VGA compatible)
- Bespoke Equipment & Stationery Packs are available on request

Room Name	Conservatory	
Dimensions	Total Area	135m2
	Room Size	9m x 7m
	Room Height	3m
	Entrance Width	1.75m
Capacities for...		
Room Setup Styles	Theatre	30
	Round Tables	30
	Cabaret	24
	Boardroom	20
	U/Shape	20
	Classroom	12



The Residences

ROOM FEATURES

The Residences has been developed by us in the grounds of Tullyglass Hotel to accommodate a specific need that was identified from our business users.

It is self-contained, offers highly specified bedrooms (if required to allow for overnight stays) and has both meeting and catering facilities. This allows management, team building and other special meetings to be held 'in camera', away from the gaze of others.

It is a comfortable size for groups of between two and 10 dependent upon the objectives of the meeting. We can arrange the space for either informal or formal usage.

- Adaptable space dependent upon your event
- Fully Wheelchair Accessible
- Free super-fast WI-FI, offering up to 100mbps
- 60 inch flat screen TV (HDMI and VGA compatible)
- Bespoke Equipment & Stationery Packs are available on request

Room Name		Residences
Dimensions	Total Area	26m ²
	Room Size	7m x 3.3m
	Room Height	3m
	Entrance Width	1.75m
Capacities for...		
Room Setup Styles	Theatre	-
	Round Tables	-
	Cabaret	-
	Boardroom	10
	U/Shape	-
Classroom	-	

